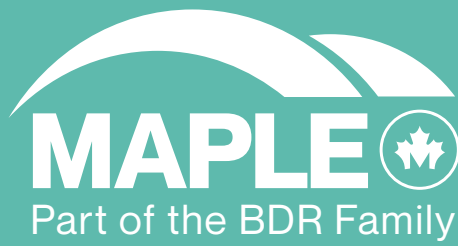




INFRASTRUCTURE

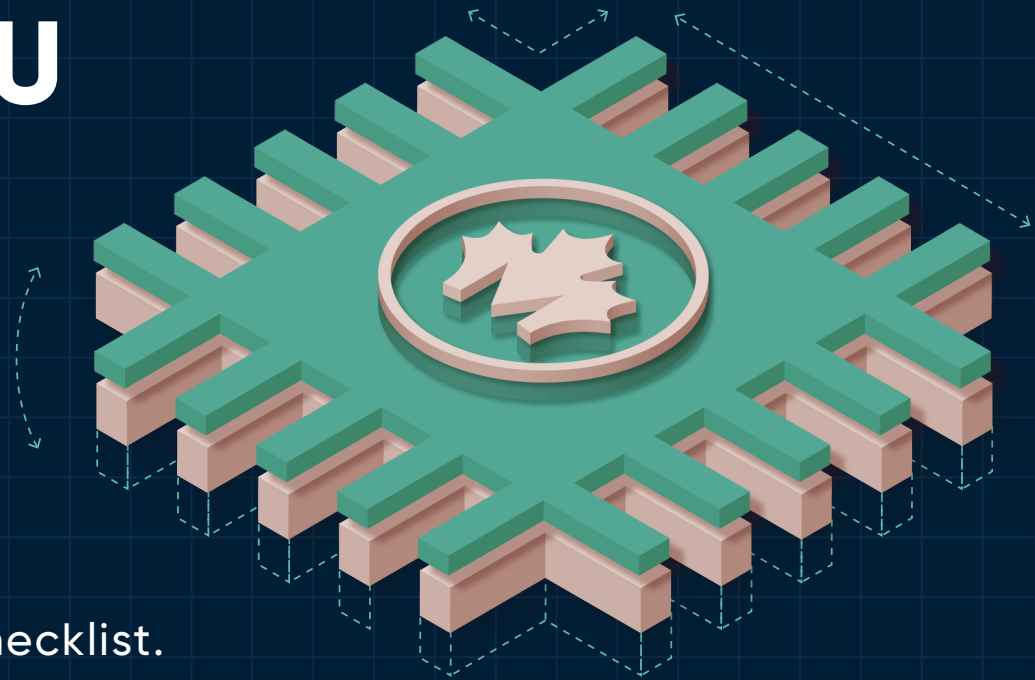


IBM®

Business  
Partner

# ARE YOU READY FOR A POWER UP?

Here's your **9-step** checklist.



## Upgrade your Power

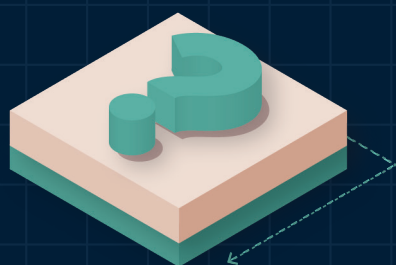
If anything is certain about the future, it's that there will be more complexity, more data to manage and greater pressure to deliver instantly. **The hardware you buy should meet today's expectations** and prepare you for whatever comes next.

To thrive in an increasingly competitive market, your infrastructure foundation should enable you to get the right **cloud mix, deliver agility, reliability and security**, and work **faster** and more **flexible**.

By updating your foundation with the **latest POWER-based servers**, you can run mission-critical requirements alongside modern, data-intensive workloads and support a secure, cloud-ready data centre.

What's more, investing in the new POWER systems positions you to get the most out of your technology capital investment, and in many cases can provide significant maintenance cost savings.

So, **are you ready for a POWER refresh?** The following page checklist will help you to decide your next actions.



# 9-STEP CHECKLIST

Your 9-step readiness checklist to POWER up

Using this checklist will help to ensure that your infrastructure strategy is aligned with your needs, avoiding potential cost overruns or capability shortfalls.



## Determine capacity requirements.

Assess operational efficiencies and identify opportunities to improve service levels while decreasing exposure to security and compliance issues / problems. With new technologies that allow you to easily adjust capacity, you will be in a much better position to lower costs, improve service levels, and increase efficiency.



## Assess operational efficiencies

Assess operational efficiencies and identify opportunities to improve service levels while decreasing exposure to security and compliance issues/problems. With new technologies that allow you to easily adjust capacity, you will be in a much better position to lower costs, improve service levels, and increase efficiency.



## Create a detailed inventory of servers across your entire IT infrastructure.

It is highly likely that your organisation has single-application /single-purpose or very under-utilised servers in the data centre. These can easily be consolidated into a single new server that can save your organization money and resources.



## Test your HA/DR strategy

Test your HA/DR strategy and determine whether it meets all corporate and government regulations. Many clients only find out there's a problem with their HA/DR plan the hard way: after the fact. Be prepared to implement a system failover strategy when it counts.



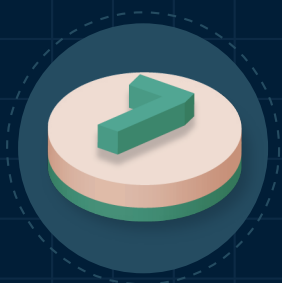
## Identify all database dependencies

Identify all dependencies for major database platforms, including Oracle, DB2, SAP HANA, and open-source databases like EnterpriseDB, MongoDB, neo4j, and Redis. You're likely running major databases on the Power Systems platform; co-locating your current servers may be a way to reduce expenditure and increase flexibility.



## Understand **current** and **future** data centre environmental requirements.

Understand current and future data centre environmental requirements. You may be unnecessarily overspending on power, cooling and space. Savings here will help your organization avoid costs associated with data centre expansion.



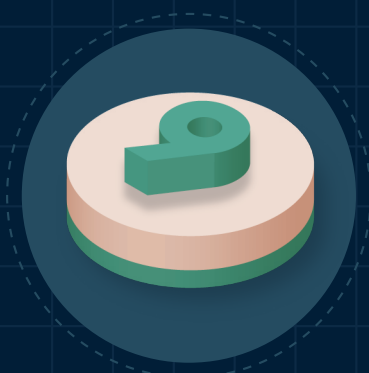
## On/Off premises

Identify the requirements of your strategy for on and off-premises cloud infrastructure. As you move to the cloud, ensure you have a strong strategy to determine which applications can be moved off-premises. Choose the core platform that offers the most choice, flexibility, and fastest route to the cloud at the lowest cost.



## Cloud investment

Determine and show how proposed investments align with moving to the cloud. Choose a platform that offers compelling cost advantages with built-in cloud capabilities, industry-leading performance and resiliency for mission-critical workloads.



## **Future** application requirements

Determine your future application requirements, especially around Big Data and Analytics. As more cognitive applications become available, ensure you have an infrastructure that can support them.



## Or you can let Maple check your **POWER** refresh readiness for you...

Our team can provide guidance and a TCO analysis tailored to the specifics of your data centre and your organisation's business needs, to ensure you get the best business outcome from your investments



# Why you should consider a **Power** refresh?



## Enhanced cloud capabilities

Build a cloud any way you want. POWER9 is optimised for private, public, hybrid or multi-clouds, providing the agility, cost-effectiveness and simplified management needed to deliver business results.



## Security for your mission-critical data

Running your data centre on old hardware leaves you at risk. POWER9 servers are delivered securely with preloaded firmware and operating system security patches that mitigate known vulnerabilities.



## Reduced maintenance cost

Prepare for end-of-service and support, stop paying separately for maintenance, and ensure availability of replacement parts.



## Industry-leading reliability

IBM servers have delivered the highest reliability in the industry for 10 years running – up to 18x more reliable than competitors.



## Future-forward AI capabilities

Bring your data centre into the future and build the foundation for new workloads with AI capabilities. POWER9 enables you to take advantage of AI tools and capabilities like Watson, natural language understanding, visual recognition, and more.

## How to find out more

For more information about how a **POWER** up can benefit your organization, contact **Will Guyatt** at [william.guyatt@maplecom.co.uk](mailto:william.guyatt@maplecom.co.uk)

## About Maple

At Maple, we see ourselves as a business partner in the fullest sense of the term. We work closely with our customers across multiple business cycles to ensure they get the best business outcome from their investments in digital platforms, data and IoT as their digital strategy evolves.

With a solid market perspective, over 20 years' experience in delivering IBM state-of-the-art enterprise solutions, we can support businesses to turn their ambitions into reality.

So, whether you're looking to enhance your current IT infrastructure, or adopt new digital capabilities and unlock the power of data, Maple has the experience and know-how to help.

Email us on  
[info@maplecom.co.uk](mailto:info@maplecom.co.uk)

Call us on  
**020 8941 0770**

Visit our website at  
[www.maplecom.co.uk](http://www.maplecom.co.uk)



**MAPLE**

**SECURITY. FLEXIBILITY. POWER**

Delivering true peace of mind to our customers